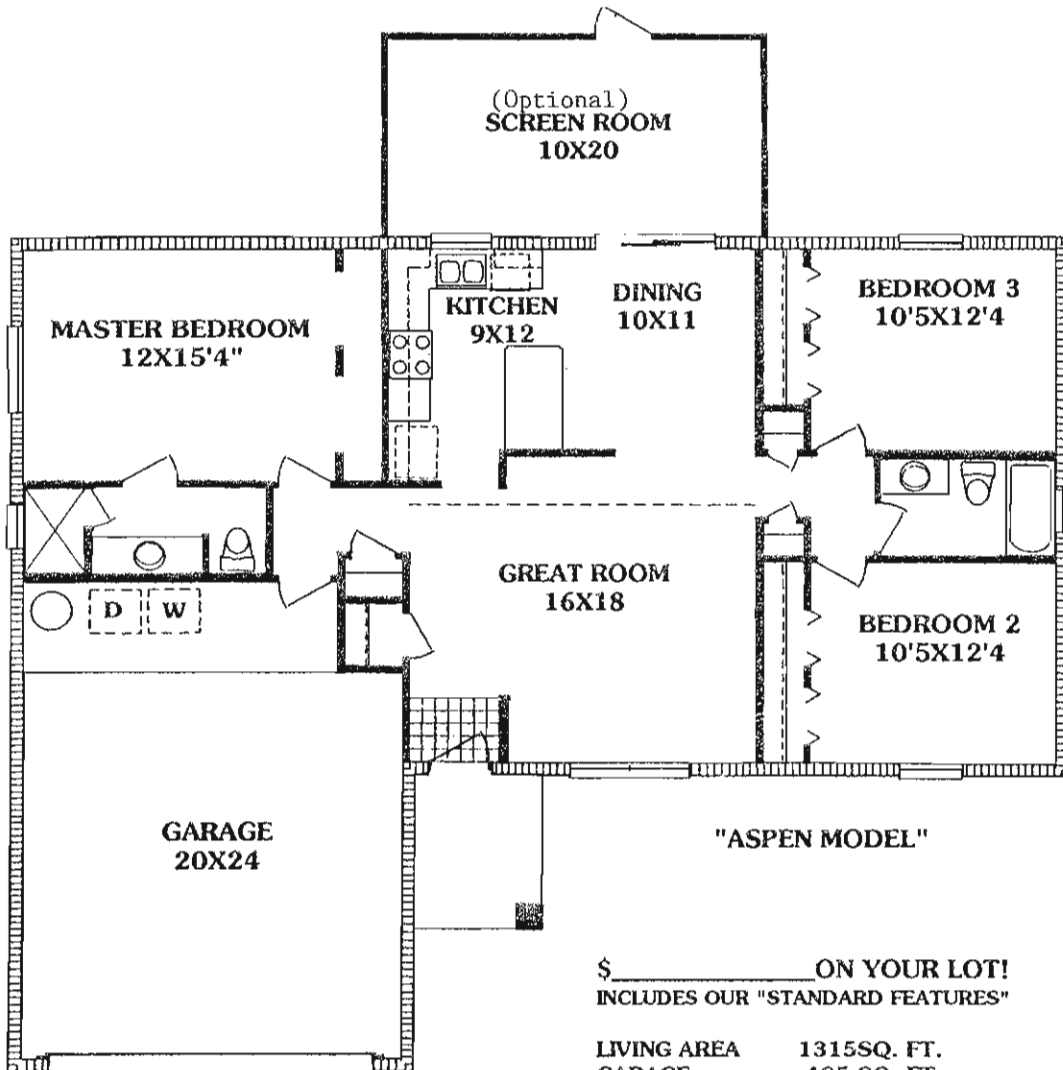
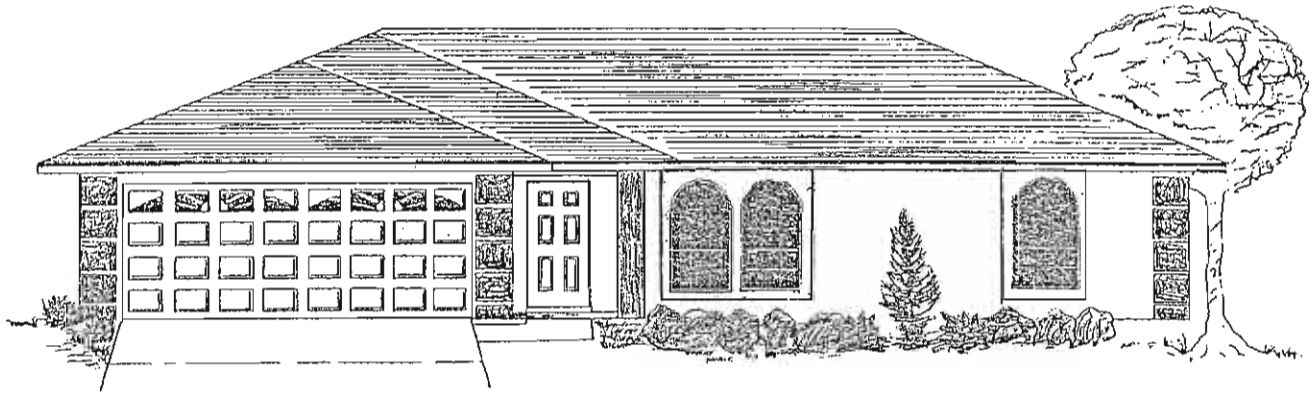


DSI Danny Sadler Inc.
 Professional Home Builder
 2723 Thornhill Road
 Auburndale, FL 33823
 Ph.(863) 967-4235
 State Lic. #CBC059652
 and QB0015606



"ASPEN MODEL"

\$ _____ ON YOUR LOT!
 INCLUDES OUR "STANDARD FEATURES"

LIVING AREA	1315SQ. FT.	
GARAGE	485 SQ. FT.	
SCREEN ROOM	213	(Optional)
ENTRY	53	
TOTAL UNDER ROOF	2068	

ROOM SIZES MAY VARY SLIGHTLY. RENDERINGS ARE FOR ILLUSTRATION ONLY.
 PRICE AND FEATURES SUBJECT TO CHANGE WITHOUT NOTICE. ALL COPY RIGHTS RESERVED!